

New Paths Music



Spring Festival

10 - 14 April 2024

www.newpathsmusic.com

What to look out for...

Pull out the stops:

We host the final of the Dame Gillian Weir Messiaen Prize: outstanding young organists from the Royal Birmingham Conservatoire compete in the Minster. Hear tales from Dame Gillian's own illustrious career, and catch organ music sprinkled through the festival!



Living music:

Contemporary composers featured include Ayanna Witter-Johnson, Amanda Feery, Cheryl Frances-Hoad, James MacMillan, Jacobus Kloppers and Edmund Finnis. Particularly notable is only the second ever performance of Ian Venables' Portraits of a Mind, an evocative homage to Vaughan Williams.

Reframing the past:

Plainsong, folk tunes and medieval melodies infuse music from Finnis' first quartet to Vaughan Williams' string quintet. Meanwhile, Christian Forshaw and Grace Davidson return to Beverley with another magical late-night programme, Sanctuary.



Westwood:

A celebration of Beverley's iconic and much-loved pastureland, with music under trees and by mills. We also conjure up nature of other sorts – from waves and breezes to mountains and stars.



Sing us a song:

Three feted song singers – Harriet Burns, Jess Dandy and Alessandro Fisher – join us for Brahms, Barber, Vaughan Williams, Clarke, Villa-Lobos and more. Five songs by John Joubert, who lived and worked down the road in Hull, published just last year, feature in the opening concert.



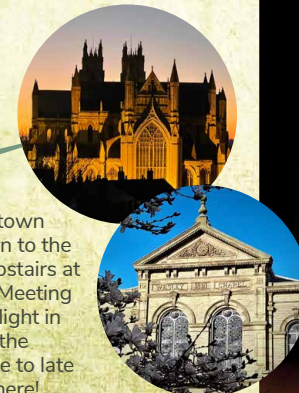
Hidden names:

The festival is peppered with composers whose music is rarely played – Emilie Mayer, Marina Dranishnikova, Grażyna Bacewicz – alongside those whose music has come to be well-known in recent years – Rebecca Clarke and Lili Boulanger.



Beverley's venues:

Music resounds across the town during the festival: we return to the East Riding Theatre, add Upstairs at the Monks and the Quaker Meeting House to our roster, and delight in the magic of St Mary's and the Minster. From breakfast time to late night, you'll find us somewhere!



Honorary Associate Artist:

In recognition of his major contribution to the musical life of Beverley, we are delighted to name Martin Roscoe our Honorary Associate Artist. Catch him with his chosen collaborators Jess Dandy and Fenella Humphreys.

Anniversaries:

We mark anniversary years for Fauré, Poulenc, Dodgson, and Reinecke – best known for his impact as a teacher, with students ranging from Janáček to Albeniz.



Artists

Artistic Director: Libby Burgess

Founder: Roland Deller



1. Jamie Campbell – violin 2. Alessandro Ruisi – violin 3. Kasia Ziminska – viola 4. Nathaniel Boyd – cello
5. Alexandra Caldon – violin 6. Alex Caldon – trumpet 7. Fenella Humphreys – violin
8. Rosalind Ventris – viola 9. Cara Berridge – cello 10. Marianne Schofield – Double bass
11. Eleanor Turner – harp 12. Fiona Colville – flute 13. John Slack – clarinet

14. James Turnbull – oboe 15. Martin Roscoe – piano 16. Harriet Burns – soprano
17. Alessandro Fisher – tenor 18. Jess Dandy – contralto 19. Richard Pinel – organ
20. Christian Forshaw – saxophone 21. Grace Davidson – soprano 22. Jonathan Clinch – speaker
23. Madeleine Holmes – yoga & soprano 24. Dame Gillian Weir – speaker 25. Libby Burgess – piano

Day 1: Wednesday 10th April

Opening concert: La Trompette

8pm – 9:40pm | £15 | St Mary's Church

Torelli: Trumpet Concerto in D | **Saint-Saëns:** Septet | **Boulanger:** D'un matin de printemps
Rubbra: Oboe Sonata | Songs by **Brahms, Joubert and Tosti**

We raise the curtain on the festival with a concert named after the late-night Parisian music club which Saint-Saëns frequented, and for which he wrote his rambunctious Septet. This smorgasboard of music sets up our festival themes of nature and friendship, and showcases many of the musicians appearing this week. From the baroque splendours of Torelli to the Neapolitan charm of Tosti, from the mid-century angst of Rubbra to the sunny D'un matin de printemps and the virtuosic Septet by Saint-Saëns, the collection takes us on a true European journey. Hull composer John Joubert's Five Songs were only published as a collection last year, and to perform them we welcome back star tenor Alessandro Fisher, whose singing here in 2022 was stunning.

"Arguably the finest ever recorded version of Rubbra's magnificent Sonata" (Music Web International on James Turnbull & Libby Burgess' disc The English Oboe: Rediscovered)



Alexandra Caldon



Alessandro Fisher

Memento

11am – 12noon | £15 | Toll Gavel United Church

Mozart: Oboe Quartet | **Witter-Johnson:** Meditation | **Dodgson:** Countdown
MacMillan: Memento | **Vaughan Williams:** Phantasy Quintet

Vaughan Williams' quintet for strings was written shortly after his famous Fantasia on a Theme of Thomas Tallis, and similarly takes medieval music as its starting point, creating a timeless spaciousness. With its warm texture featuring two violas there is an almost orchestral expansiveness to this nostalgic music. We mark Stephen Dodgson's centenary year with Countdown – a jovial and lyrical suite for oboe and harp written in honour of the late Queen Mother's 90th birthday: each movement counts something different, from candles to sheep to blessings! Reflective contemporary works by Ayanna Witter-Johnson and James MacMillan are offset against the frothy energy of Mozart's much-loved oboe quartet.

Supported by the Stephen Dodgson Charitable Trust.



Alessandro Ruisi



James Turnbull

Eleanor Turner

Day 2: Thursday 11th April

Breakfast with Brahms

9am – 9:30am | Free entry | St Mary's Church

Brahms: Violin Sonata in A

Composed in the Alps in summertime, Brahms' second violin sonata captures both the sunshine and the wide open space with which he was surrounded as he wrote. Quoting his own Op 105 songs about music and memory, heard in Wednesday's concert, Brahms combines introspection and heart-on-sleeve passion in this rich beautiful work.

Jamie Campbell makes a welcome return to Beverley this year and joins Libby Burgess in this joyful start to the day.



Jamie Campbell

That most human of all instruments

2:30pm – 3:40pm | £15 | St Mary's Church

Brahms: Viola Songs | **Bridge:** Viola songs
Clarke: English and Irish folksongs
Music by **Villa-Lobos, Mills and Saint-Saëns**

In recognition of his major contribution to the musical life of Beverley across thirty years, as Artistic Director of the Beverley Chamber Music Festival, we are delighted to name Martin Roscoe our Honorary Associate Artist.

For his first New Paths concert in that capacity, Martin has chosen to collaborate with contralto Jess Dandy and violinist Fenella Humphreys, in a programme that ranges from the rich sonority of Brahms and Bridge to the Brazilian sound-world of Villa-Lobos, from English and Irish folksongs interpreted by Rebecca Clarke to Rainer Maria Rilke's words set by Welsh composer Alex Mills.

"A bronze depth of tone" (Gramophone Magazine on Jess Dandy)



Jess Dandy

Martin Roscoe

Talk: A Listening Ear

4:30pm-5:30pm | Free entry | East Riding Theatre

Dr Jonathan Clinch, Lecturer at the Royal Academy of Music, returns to Beverley to consider how we listen to British music – at a time when the very notion and identity of Britishness is a divisive topic. Drawing on ideas from Charles Stanford in his centenary year, Jonathan will outline new ways of enjoying what we know and love, as well as exploring the unknown – taking in music familiar and obscure from across the festival programme.



Jonathan Clinch

Wedding Present



8pm – 9:20pm | £15 | East Riding Theatre

Schumann: Myrthen | **Bach:** French Suite in G major
Messiaen: Theme and Variations | **Elgar:** Salut d'amour

After a decade of battling her family's refusals, as they rejected her chosen partner, Clara Wieck finally married Robert Schumann in 1840 – and, as a wedding gift, he wrote her a set of songs. Myrthen, named after a wedding garland, explores facets of love: a parent's love, a distant love, a love of a drink, and, of course, romantic love. Celebrated song singers Harriet Burns and Alessandro Fisher join Libby Burgess for this beautiful cycle, rarely performed in its entirety. Interspersed between the songs are other pieces written as wedding or engagement gifts, by Bach, Messiaen and Elgar, featuring violinist Fenella Humphreys.



Libby Burgess



Harriet Burns

Late Beethoven

10pm – 10:45pm | £10 | St John of Beverley RC Church

Beethoven: String Quartet No 15 Op 132

A troubled, unwell man, unable to hear, and who knew his life was running out: Beethoven's late period generated music of extraordinary intensity, innovation, and profundity. After his vast ninth symphony, Beethoven turned almost solely to string quartets in his last years. These late quartets were roundly dismissed by the audience of the day: composer Louis Spohr called them 'indcipherable, uncorrected horrors' – and yet this music has had a deep effect on generations since.

Op 132 is particularly moving for its journey through depression and illness to healing and hope, in its Song of Thanksgiving, or Heiliger Dankgesang.



Alessandro Ruisi

Day 3: Friday 12th April

Breakfast with Bach

9am – 9:30am | Free entry
St Mary's Church

Bach: Toccata and Fugue in D minor
Bach: Partita in E major

Violinist Fenella Humphreys opens our day of organ celebrations with her own transcription for solo violin of Bach's iconic Toccata and Fugue in D minor.

The last of Bach's solo sonatas and partitas for violin is in the bright key of E major: from the first note of its exuberant Preludio, this collection of dances is sure to sparkle and soothe in the early morning beauty of St Mary's.

"Humphreys's utter absorption and delight shines forth at every turn strong-toned, easy fluidity and immaculate technique"
(Gramophone Magazine)



Fenella Humphreys

Babies and Toddlers: Sounds of Spring

10:30am – 11:15am
Free entry (registration advised)
Toll Gavel United Church

Our baby and toddler concerts are always a highlight of the New Paths calendar, as our youngest audiences dance and sing (and cry and feed) to live music performed up close by our festival artists. Entry is free but reserve your place for little ones and their grown-ups to enjoy a relaxed morning of top quality music.



Spring Masque

12noon – 1:10pm | £12 | St Mary's Church

Fauré: Piano Trio | Duruflé: Prélude, Récitatif et Variations
Barber: Hermit Songs | Clarke: Passacaglia | Sutton: Spring Masque

Inspired by the timeless architecture of St Mary's, we weave a journey through pieces celebrating earlier times. Samuel Barber's Hermit Songs set texts written by 8th-13th century Irish monks, painting life in all its fullness, from The Monk and his Cat or Promiscuity to The Crucifixion and The Desire for Hermitage. Duruflé's Trio for flute, viola and piano takes a plainsong melody as its theme, while fellow Frenchman Fauré's piano trio takes hints of medieval modal harmony and reimagines them in heartfelt chromaticisms.

Celebrated violist Rosalind Ventris also features in two pieces evoking Middle England – Rebecca Clarke's Passacaglia on an Old English Tune, and Adrian Sutton's toe-tapping folk-infused Spring Masque.

"Burns's huge soprano voice is terrifically exciting when it's at full throttle, but warmly tender when shaded down"
(The Times)



Rosalind Ventris

Dame Gillian Weir in Conversation

2:30pm – 3:30pm | Free | Toll Gavel United Church

Dame Gillian Weir has enjoyed an unparalleled career as an internationally acclaimed concert organist. Born in New Zealand, she won the prestigious St Albans International Organ Competition and made her Royal Festival Hall and Proms debuts, all whilst still a student. Since then she has spent five decades touring the world, performing, making benchmark recordings, teaching, and broadcasting.

This is a special opportunity to hear Dame Gillian's stories and reflections from a prestigious and fascinating career, and to hear about her special relationship with Olivier Messiaen and his music, prior to this afternoon's competition.



Dame Gillian Weir

The Gillian Weir Messiaen Prize

4pm – 5:45pm | Free | Beverley Minster

Dame Gillian Weir is one of the pre-eminent Messiaen interpreters worldwide and in 2018 she endowed the Gillian Weir Messiaen Prize for students at the Royal Birmingham Conservatoire, in recognition of the organ department's 'glowing international reputation'. We are delighted to be hosting the final of this year's competition, as part of our new partnership with the Conservatoire.

Three outstanding student organists each present a 20-minute programme, including music by Messiaen, to a panel comprising Westminster Cathedral Director of Music Simon Johnson, New Paths Artistic Director Libby Burgess, and Dame Gillian herself. The afternoon begins with a short introduction to the Minster's organ and the challenges faced by the competitors, by Minster Director of Music Robert Poyser and Head of Conservatoire Organ Studies Daniel Moul, and concludes with a public adjudication by the panel.

Tea, coffee and biscuits will be served during the break whilst judging takes place.



Dame Gillian Weir

Simon Johnson

Libby Burgess

New Paths was founded in memory of Alan Spedding MBE, for over forty years Director of Music at Beverley Minster: this special building and its fine Snetzler organ have always been at the heart of our festivals. The instrument dates from 1767, with modifications made over the centuries, most recently in 2016.

Did you know it contains four manuals (keyboards) and 4,000 pipes? The beautiful wooden organ screen was designed by Sir George Gilbert Scott and made in a Beverley workshop by the cabinet maker and wood carver James Elwell – father of artist Fred Elwell, whose paintings are displayed around the town.



Portraits of a Mind

8pm – 9:15pm | £15 | St Mary's Church

Finzi: Bagatelles | **Poulenc:** Huit chansons polonaises | **Bacewicz:** Polish Caprice
Bartok: String Quartet No 3 | **Venables:** Portraits of a Mind

Ian Venables' ethereal Portraits of a Mind, for tenor, string quartet and piano, was commissioned by the Ralph Vaughan Williams Society in honour of that earlier composer's 150th Anniversary in 2022, and premiered by Alessandro Fisher, who performs it tonight. Inspired by the musical language of Vaughan Williams and his artistic credo – 'the object of art is to reach out to the ultimate realities through the medium of beauty' – Venables references music from The House of Life to The Lark Ascending, in a deeply evocative and atmospheric cycle.

Shadows of wars lie variously over Poulenc's Polish songs – written in the style of Chopin, in homage to the composer whose music he so admired – and Bartok's visceral third quartet, as well as Finzi's serene pastoral Bagatelles for clarinet and piano, premiered at the National Gallery in the 1940s.

"Fisher's performance was supremely accomplished, delivering songs in French, Russian, German, and Italian with equal ease – and his high notes were floated with exceptional grace"
(The Independent)



Alessandro Fisher



Sanctuary

10pm – 10:45pm | £10 | St Mary's Church

Christian Forshaw and Grace Davidson's Historical Fiction performance in 2021 was a real festival highlight, and here they return with another late-night collaboration weaving together the haunting sonorities of saxophone, soprano and organ.

2024 marks the twentieth anniversary of Christian's groundbreaking album, Sanctuary, which reached the top of the charts and was played over 200 times in the year of its release by Classic FM.

Simple ecclesiastical melodies inspired by Christian's childhood as a church chorister are cast in a new contemporary light and developed into atmospheric concert pieces, perfect for the candlelit setting of St Mary's.



Christian Forshaw

Grace Davidson

Day 4: Saturday 13th April

Yoga

9am – 9:45am & 10am-10:45am
£15 per session | Quaker Meeting House

In the tranquil setting of the Quaker Meeting House, Madeleine Holmes guides two practices to rejuvenate you for Spring, with live music from harpist Eleanor Turner.

9am: Rejuvenate: Yin Yoga for Spring Awakening: a gentle, nourishing sequence of deep, passively held postures to refresh the waters of body, mind and spirit for the Spring season of rebirth.

10am: Rejoice: Yoga Flow for Rebirth: an uplifting, heart-opening flow to warm the fire of the body, mind and spirit and stimulate grounded growth as we root to rise through the Spring season ahead.

Take either class, or both consecutively! Numbers for these events are very limited owing to the small space so early booking is advised. Further information can be found on www.newpathsmusic.com.



Eleanor Turner



Madeleine Holmes



Nature the Great Teacher

11am – 12:10pm | £15 | St Mary's Church

Whitacre: Seal Lullaby | **Bennett:** Country Dances | **Rossini:** William Tell Overture | **Feery:** Boreal
Frances-Hoad: Star Falling | **Finnis:** Quartet No 1 'Aloysius' | **Kloppers:** Last Rose of Summer

Clouds, valleys, breezes, waves, mountains, petals and stars – all are woven together in this homage to nature, the great teacher. Whitacre's choral music is celebrated the world over, and here his Seal Lullaby is performed by strings and piano. Edmund Finnis' 2018 first string quartet was praised by The Times for its 'affecting rocking patterns, expressive musings on gravely beautiful polyphony by Byrd, and natural ease.' Nature is at the basis of much folk music, so we hear jazz-infused transcriptions for saxophone by Richard Rodney Bennett of 16th century country dances, and a lyrical arrangement by Jacobus Kloppers of Irish tune The Last Rose of Summer.

To conclude the programme, organist Richard Pinel joins pianist Libby Burgess in their own flamboyant duet arrangement of the William Tell Overture (better known to some as 'The Lone Ranger').

"Choose only one master – Nature" (Rembrandt)



Richard Pinel

Westwood Walk

2pm – 3:30pm | Free | The Westwood

The Westwood Pasture is a beloved feature of Beverley life, a 600-acre expanse of common land on the edge of the town. Once a dense and noble oak forest, the Westwood is now known for its open vistas, and to this day local pasture freemen have grazing rights here. Join fellow festivalgoers on a guided walk across one of the great urban commons of England, punctuated by short live musical items along the way.

Meet at the Market Cross for a 2pm departure. The terrain will be a mixture of paved paths and grass: please choose footwear accordingly. If particularly bad weather prevents us from going ahead, information will be posted on the New Paths website.



Those who can, teach

4:30pm-5:40pm | £12 | Beverley Minster (South Transept)

Reinecke: 'Undine' Flute Sonata | Bruch: Eight pieces (extracts)
Janáček: Pohádka | Piano pieces by Smyth, Albeniz and Grieg

Good teachers can be lifechanging, and so, in his 200th anniversary year, we dive into the world of Carl Reinecke – one of the great composition teachers of his day, with an improbably eclectic range of students. Journeying through them we encounter Bruch, his soulful Jewish heritage worn heart on sleeve in trios for clarinet, cello and piano; Janáček, whose ghostly, atmospheric fairy-tale story Pohádka features cellist Cara Berridge; Albeniz, all Mediterranean sunshine in his Tango; and Grieg and Smyth, whose romantic lyricism shine through in piano solos from Artistic Director Libby Burgess.

Woven between this cast are the movements of Reinecke's own most famous piece, Undine, for which we are delighted to welcome flautist Fiona Colville back to Beverley.



Cara Berridge

Saturday Night Live

8pm – 9:40pm | £18 | St Mary's Church

Mozart: Clarinet Quintet | Prokofiev: Overture on Hebrew Themes
Dranishnikova: Poem | Mayer: Piano trio in B minor

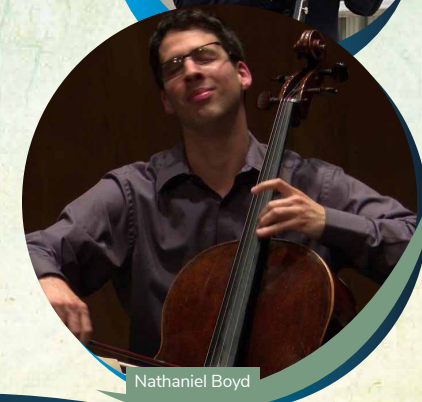
Mozart's Clarinet Quintet regularly tops the charts as one of the most-loved pieces of chamber music of all time – the serenity of its slow movement matched by the sheer joy and elegance of its fast music. Much-loved New Paths clarinettist John Slack returns to Beverley for this special festival moment.

Prokofiev's Overture on Hebrew Themes sets traditional Jewish melodies and was commissioned by colleagues in the US; the klezmer style draws together 'melancholy joy', piquant rhythms, and footstamping energy.

Prokofiev's family friend Marina Dranishnikova has left only one piece to posterity, the Poem for oboe and piano – but it is magical – deeply soulful and passionate. Emilie Mayer's style is reminiscent of her better-known male contemporary Mendelssohn, and her music is now rightly being played more regularly; Alessandro Ruisi and Nathaniel Boyd join artistic director Libby Burgess for this lyrical and virtuosic work.



John Slack



Nathaniel Boyd



Libby Burgess

Alessandro Ruisi

Day 5: Sunday 14th April

Morning Worship

9:30am – 10:45am | Free entry | St Mary's Church

Join the choir and congregation of St Mary's for their Sunday morning service of Holy Communion – with appearances by New Paths musicians too.



Spring Fever

12noon – 1pm | £15 | Upstairs at the Monks

Buy yourself a drink from the bar at the Monks Walk, and head upstairs to this intimate acoustic music venue – with a 13th-century wall for a backdrop.

Lyric soprano Madeleine Holmes, regular guest vocalist at The Ritz, leads us on a brunchtime skip through some of our favourite moments of spring and love from the golden age of the American Songbook, from first love through lost love, to loving again – with the Gershwins, Rodgers & Hart & Hammerstein, Cole Porter, John Dankworth and Michel Legrand.

Why not book yourself in for lunch downstairs afterwards?
Call Gill and the team at the Monks on 01482 880 871.

Please note this venue is on the first floor (up 16 steps with a handrail) and because of the historic nature of the building there is no lift available.



Madeleine Holmes

Double Bill 1: Darkness and Light

3pm – 4:10pm | £12 | St Mary's Church

Vaughan Williams: House of Life
Shostakovich: Cello Sonata | Poulenc: Flute Sonata

Celloist Nathaniel Boyd was a hit as part of our cello team in 2023, and here he joins Libby Burgess in Shostakovich's striking cello sonata. Shostakovich's life and creativity were governed by the political strictures of Soviet-era Russia, and yet in the sonata it is personal struggle that underwrites the music, written during a period of separation from his wife.

Poulenc as a person and a musician encapsulated 'darkness and light': his writing swings between exuberant and nostalgic – he himself was described by a contemporary as 'monk and rascal'.

Following Friday's homage to Vaughan Williams, Jess Dandy performs House of Life, an intimate celebration of mutual love, drawing together six of the most delicate and devoted sonnets by poet and artist Dante Gabriel Rossetti, including one of Vaughan Williams' most loved songs, Silent Noon.

Buy a combined Double Bill ticket for this and the next concert at just £20.



Jess Dandy



Nathaniel Boyd



Libby Burgess

Double Bill 2: Closing Concert

4:45pm – 5:30pm | £12 | St Mary's Church

Brahms: Piano Quintet

New Paths is built around friendships, and so is the story of Brahms' Piano Quintet: the evolution of the piece was steered by advice and suggestions from Brahms' two closest friends and musical collaborators, Joseph Joachim and Clara Schumann, and changed guise several times. The final result – continuing the theme of darkness and light from the previous concert – combines torrential outpourings and fieriness with rapturous romantic serenity, in an exhilarating showpiece for our string team and pianist.

One of the great works of chamber music, our festival closer also pays homage to our own name: Robert Schumann was so impressed by Brahms' music that he wrote an article describing its Neue Bahnen – or, 'new paths'.

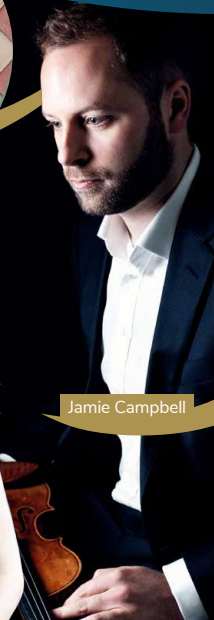
Buy a combined Double Bill ticket for this and the previous concert at just £20.



Alessandro Ruisi



Kasia Ziminska



Jamie Campbell

How to purchase tickets

Tickets go on sale to the general public on Saturday 17th February.



Online:
newpathsmusic.com

Use the secure online booking service on our website.

Online booking closes two hours before each concert starts.



Phone:
 01482 391 672

Call the box office at Beverley Tourist Information Centre.



In person:

Beverley Tourist Information Centre, Cross Street, Beverley HU17 9AX
 Open 9:30am - 5pm (weekdays) / 9am-4pm (Saturdays).
 Pay by cash, card or cheque.



On the door:

Tickets are available on the door of the concert from 30 minutes prior to the performance, subject to availability.
 Card payments only.

If you are unable to use your ticket, refunds can only be given where the concert is sold out and we are able to sell on your ticket. Please note there will be a 10% administration charge for refunds.

Financial hardship

A limited number of tickets are available to anyone who would like to attend a concert but cannot afford a ticket. Please email info@newpathsmusic.com if you would like to attend a concert but you are demonstrably unable to afford a ticket (for example due to unemployment). Everyone is welcome to share in this wonderful music and all hardship requests will be treated with discretion and dignity.



Under-18s and full-time students can come to any festival event completely free of charge (subject to availability). One free ticket is also available per adult accompanying under-16s.

These 'Golden Tickets' can be booked online by emailing us at info@newpathsmusic.com.

Festival at a glance

Date	Event	Price	Time	Venue
Wednesday	Opening concert: La Trompette	£15	8pm	St Mary's Church
Thursday 	Breakfast with Brahms	Free	9am	St Mary's Church
	Memento	£15	11am	Toll Gavel United Church
	That most human of all instruments	£15	2.30pm	St Mary's Church
	Talk: A Listening Ear	Free	4.30pm	East Riding Theatre
	Wedding Present	£15	8pm	East Riding Theatre
	Late Beethoven	£10	10pm	St John of Beverley RC Church
Friday 	Breakfast with Bach	Free	9am	St Mary's Church
	Babies & Toddlers: Sounds of Spring	Free	10.30am	Toll Gavel United Church
	Spring Masque	£12	12 noon	St Mary's Church
	Dame Gillian Weir in Conversation	Free	2.30pm	Toll Gavel United Church
	The Gillian Weir Messiaen Prize	Free	4pm	Beverley Minster
	Portraits of a Mind	£15	8pm	St Mary's Church
	Sanctuary	£10	10pm	St Mary's Church
Saturday 	Yoga	£15	9&10am	Quaker Meeting House
	Nature the Great Teacher	£15	11am	St Mary's Church
	Westwood Walk	Free	2pm	The Westwood
	Those who can, teach	£12	4.30pm	Beverley Minster
	Saturday Night Live	£18	8pm	St Mary's Church
Sunday 	Morning Worship	Free	9.30am	St Mary's Church
	Spring Fever	£15	12 noon	Upstairs at the Monks
	Double Bill 1: Darkness and Light	£12	3pm	St Mary's Church
	Double Bill 2: Closing Concert	£12	4.45pm	St Mary's Church





Follow us on social media

 NewPathsMusic

 @NewPathsMusic

 @newpathsmusic

New Paths
Music

Founder: Roland Deller

Artistic Director: Libby Burgess

www.newpathsmusic.com